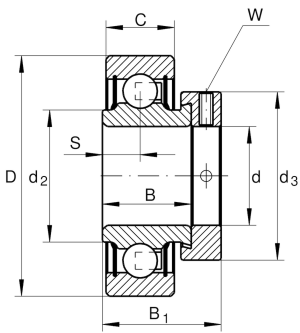


**RA108-NPP**

Radial insert ball bearing

Radial insert ball bearing RA..-NPP

## Technical information



## Your current product variant

Sealing	NPP	Lip seal on both sides
Shape of outer surface	Z	

## Main Dimensions &amp; Performance Data

d	38,1 mm	Bore diameter
<b>d</b>	<b>38,1 mm</b>	<b>Bore diameter, inch</b>
D	80 mm	Outside diameter
B <sub>1</sub>	43,8 mm	Locking collar total width
B	30,2 mm	Width
C <sub>ur</sub>	940 N	Fatigue load limit, radial
C <sub>r</sub>	32.500 N	Basic dynamic load rating, radial
C <sub>0r</sub>	19.800 N	Basic static load rating, radial
≈m	0,636 kg	Weight

## Dimensions

C	21 mm	Width, outer ring
S	11 mm	Distance raceway
d <sub>2</sub>	49,4 mm	Rib diameter sealing inner ring
d <sub>3</sub>	58 mm	Outside diameter locking collar/locknut
<b>W</b>	<b>4,762 mm</b>	<b>Width across flats (Inch)</b>



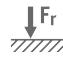
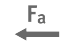




### Calculation factors

---

$f_0$	13,6	Calculation factor
-------	------	--------------------

### Characteristics

---

-  Radial load
-  Axial load in one direction
-  Axial load in two directions
-  Lifetime lubrication, freedom from maintenance
-  Grease Lubrication
-  Sealed on both sides