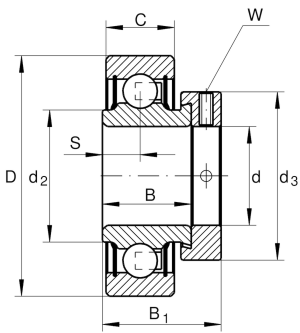


**RA102-NPP**

Radial insert ball bearing

Radial insert ball bearing RA..-NPP

Technical information



Your current product variant

Sealing	NPP	Lip seal on both sides
Shape of outer surface	Z	

Main Dimensions & Performance Data

d	28,575 mm	Bore diameter
d	28,575 mm	Bore diameter, inch
D	62 mm	Outside diameter
B ₁	35,8 mm	Locking collar total width
B	23,8 mm	Width
C _{ur}	520 N	Fatigue load limit, radial
C _r	19.500 N	Basic dynamic load rating, radial
C _{0r}	11.300 N	Basic static load rating, radial
≈m	332,9 g	Weight

Dimensions

C	18 mm	Width, outer ring
S	9 mm	Distance raceway
d ₂	37,4 mm	Rib diameter sealing inner ring
d ₃	44 mm	Outside diameter locking collar/locknut
W	3,969 mm	Width across flats (Inch)



Calculation factors

f_0	13,8	Calculation factor
-------	------	--------------------

Characteristics



Radial load



Axial load in one direction



Axial load in two directions



Lifetime lubrication, freedom from maintenance



Grease Lubrication



Sealed on both sides