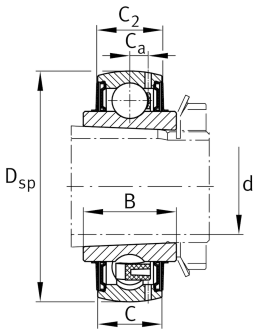
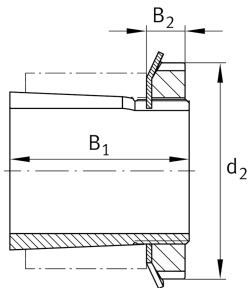


**FAG****UK218**

Radial insert ball bearing

Radial insert ball bearings UK, spherical outer ring, location by adapter sleeve, RSR seals on both sides

Technical information

**Main Dimensions & Performance Data**

D_{SP}	160 mm	Outside diameter
B	51 mm	Width
C_{0r}	72.000 N	Basic static load rating, radial
C_{ur}	3.350 N	Fatigue load limit, radial
C_r	102.000 N	Basic dynamic load rating, radial
$\approx m$	4,62 kg	Weight

Dimensions

C	38 mm	Width, outer ring
C_2	39,4 mm	Sealing total width
C_a	11 mm	Distance to lubrication hole
d_3	120 mm	Outside diameter locking collar/locknut
B_2	18 mm	Width nut and lock

Temperature range

T_{min}	-20 °C	Operating temperature min.
T_{max}	120 °C	Operating temperature max.

Calculation factors

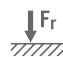
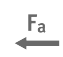
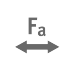




f_0	14,6	Calculation factor
-------	------	--------------------



Additional information

H2318-J30QH	Adapter sleeve
KM18	Locknut
MB18	Fuse
H.H2318	Sleeve

Characteristics

-  Radial load
-  Axial load in one direction
-  Axial load in two directions
-  Lifetime lubrication, freedom from maintenance
-  Grease Lubrication
-  Sealed on both sides
-  Static angular error and misalignment