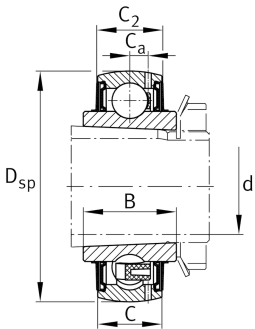
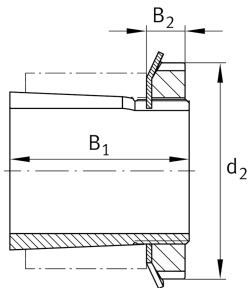


**FAG****UK207**

## Radial insert ball bearing

Radial insert ball bearings UK, spherical outer ring, location by adapter sleeve, RSR seals on both sides

## Technical information

**Main Dimensions & Performance Data**

$D_{SP}$	72 mm	Outside diameter
B	29 mm	Width
$C_{0r}$	15.300 N	Basic static load rating, radial
$C_{ur}$	800 N	Fatigue load limit, radial
$C_r$	27.500 N	Basic dynamic load rating, radial
$\approx m$	0,54 kg	Weight

**Dimensions**

C	20 mm	Width, outer ring
$C_2$	20,6 mm	Sealing total width
$C_a$	5,7 mm	Distance to lubrication hole
$d_3$	52 mm	Outside diameter locking collar/locknut
$B_2$	9 mm	Width nut and lock

**Temperature range**

$T_{min}$	-20 °C	Operating temperature min.
$T_{max}$	120 °C	Operating temperature max.

**Calculation factors**

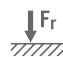
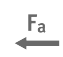
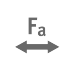




$f_0$	13,8	Calculation factor
-------	------	--------------------



### Additional information

H2307-J30QH	Adapter sleeve
KM7	Locknut
MB7	Fuse
H.H2307	Sleeve

### Characteristics

-   $F_r$  Radial load
-   $F_a$  Axial load in one direction
-   $F_a$  Axial load in two directions
-   $L_h$  Lifetime lubrication, freedom from maintenance
-  Grease Lubrication
-  Sealed on both sides
-  Static angular error and misalignment