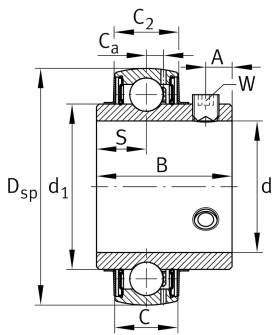


**FAG****UC216-50**

Radial insert ball bearing

Radial insert ball bearings UC, spherical outer ring, location by grub screws, RSR seals on both sides

Technical information

**Main Dimensions & Performance Data**

d	79,375 mm	Bore diameter
d	79,375 mm	Bore diameter, inch
D _{SP}	140 mm	Outside diameter
B	82,6 mm	Width
C _{0r}	54.000 N	Basic static load rating, radial
C _{ur}	2.700 N	Fatigue load limit, radial
C _r	76.000 N	Basic dynamic load rating, radial
≈m	2,76 kg	Weight

Dimensions

C	33 mm	Width, outer ring
C ₂	34,4 mm	Sealing total width
S	33,3 mm	Distance raceway
d ₁	97 mm	Rib diameter inner ring
C _a	9,3 mm	Distance to lubrication hole
A	14 mm	Distance thread

Temperature range

T _{min}	-20 °C	Operating temperature min.
T _{max}	100 °C	Operating temperature max.



Calculation factors

f_0	14,7	Calculation factor
-------	------	--------------------

Characteristics

-  Radial load
-  Axial load in one direction
-  Axial load in two directions
-  Lifetime lubrication, freedom from maintenance
-  Grease Lubrication
-  Sealed on both sides
-  Static angular error and misalignment