

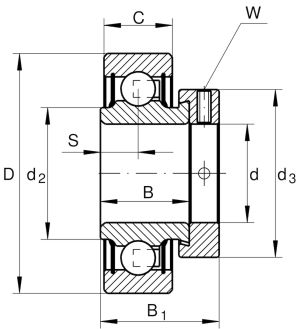
**RAE50-XL-NPP-FA106**

Radial insert ball bearing

Radial insert ball bearing RAE...-XL-NPP

X-life

Technical information

**Main Dimensions & Performance Data**

d	50 mm	Bore diameter
D	90 mm	Outside diameter
B	30,2 mm	Width
B ₁	43,8 mm	Locking collar total width
C _r	35.000 N	Basic dynamic load rating, radial
C _{0r}	23.200 N	Basic static load rating, radial
C _{ur}	1.090 N	Fatigue load limit, radial
≈m	0,779 kg	Weight

Dimensions

C	22 mm	Width, outer ring
S	11 mm	Distance raceway
d ₂	59,4 mm	Rib diameter sealing inner ring
d ₃	69 mm	Outside diameter locking collar/locknut
W	5 mm	Width of flats

Temperature range

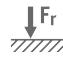
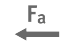




T _{min}	-20 °C	Operating temperature min.
T _{max}	120 °C	Operating temperature max.



Calculation factors

f_0	14,4	Calculation factor
-------	------	--------------------

Characteristics

-  Radial load
-  Axial load in one direction
-  Axial load in two directions
-  Lifetime lubrication, freedom from maintenance
-  Grease Lubrication
-  Sealed on both sides