

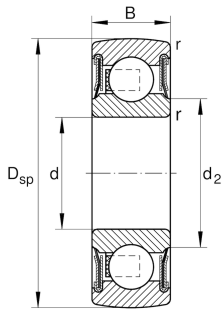
IMAGE
COMING SOON**205-XL-NPP-B**

Self-aligning deep groove ball bearings

Self-aligning deep groove ball bearings 2.-
NPP-B, spherical outer ring, inner ring for fit,
R seals on both sides

X-life

Technical information



Your current product variant

Sealing	NPP	
Shape of outer surface	B	Spherical

Main Dimensions & Performance Data

d	25 mm	Bore diameter
D _{SP}	52 mm	Outside diameter
B	15 mm	Width
C _r	14.900 N	Basic dynamic load rating, radial
C _{0r}	7.800 N	Basic static load rating, radial
m	0,119 kg	Weight

Dimensions

d ₂	30,3 mm	Rib diameter sealing inner ring
r _{min}	1 mm	Minimum chamfer dimension

Temperature range

T _{min}	-20 °C	Operating temperature min.
T _{max}	100 °C	Operating temperature max.

Calculation factors

f ₀	13,8	Calculation factor
----------------	------	--------------------



Characteristics

-  Radial load
-  Axial load in one direction
-  Axial load in two directions
-  Lifetime lubrication, freedom from maintenance
-  Grease Lubrication
-  Sealed on both sides
-  Static angular error and misalignment