

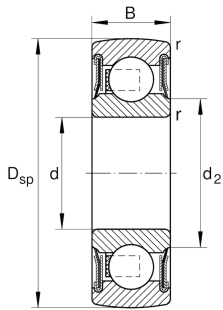
**203-XL-NPP-B**

Self-aligning deep groove ball bearings

Self-aligning deep groove ball bearings 2.-
NPP-B, spherical outer ring, inner ring for fit,
R seals on both sides

X-life

Technical information



Your current product variant

Type of Seal	NPP	
Shape of outer surface	B	Spherical

Main Dimensions & Performance Data

d	17 mm	Bore diameter
D _{SP}	40 mm	Outside diameter
B	12 mm	Width
C _r	10,100 N	Basic dynamic load rating, radial
C _{0r}	4,750 N	Basic static load rating, radial
m	0,06 kg	Weight

Dimensions

d ₂	22,5 mm	Rib diameter sealing inner ring
r _{min}	0,6 mm	Minimum chamfer dimension

Temperature range

T _{min}	-20 °C	Operating temperature min.
T _{max}	100 °C	Operating temperature max.

Calculation factors

f ₀	13	Calculation factor
----------------	----	--------------------



Characteristics

-  Radial load
-  Axial load in one direction
-  Axial load in two directions
-  Lifetime lubrication, freedom from maintenance
-  Grease Lubrication
-  Sealed on both sides
-  Static angular error and misalignment