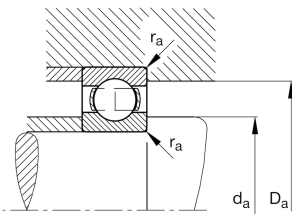
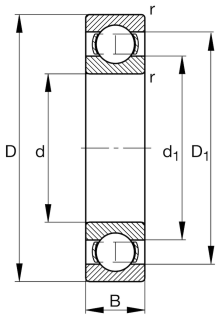


**FAG****6316-J20C-C3**

Deep groove ball bearing

Deep groove ball bearing 63.-J20C, single row, steel sheet metal cage, ceramic coated

Technical information



Your current product variant

Sealing	Without	Not sealed
Cage	JN	Steel sheet metal
Tolerance class	PN	Normal (ISO 492:2023)
Dimensional / heat stabilization	S0	Rings dimensional stabilized up to 150°
Lubricant	Without	Bearing not greased
Radial internal clearance	C3 (Group 3)	Internal clearance larger than CN
Bore type	Z	Cylindrical
Coating	J20C	Current insulation, inner ring ceramic coated

Main Dimensions & Performance Data

d	80 mm	Bore diameter
D	170 mm	Outside diameter
B	39 mm	Width
C _r	131.000 N	Basic dynamic load rating, radial
C _{0r}	87.000 N	Basic static load rating, radial
C _{ur}	5.400 N	Fatigue load limit, radial
n _G	5.400 1/min	Limiting speed
n _{gr}	5.500 1/min	Reference speed
≈m	3,75 kg	Weight



Mounting dimensions

$d_{a \min}$	92 mm	Minimum diameter shaft shoulder
$D_{a \max}$	158 mm	Maximum diameter of housing shoulder
$r_{a \max}$	2,1 mm	Maximum fillet radius

Dimensions

r_{\min}	2,1 mm	Minimum chamfer dimension
D_1	141,92 mm	Shoulder diameter outer ring
d_1	108,2 mm	Shoulder diameter inner ring

Temperature range

T_{\min}	-30 °C	Operating temperature min.
T_{\max}	150 °C	Operating temperature max.

Calculation factors

f_0	13,3	Calculation factor
-------	------	--------------------

Characteristics

	Radial load
	Axial load in one direction
	Axial load in two directions
	Grease Lubrication
	Oil Lubrication
	Not sealed
	Current insulated