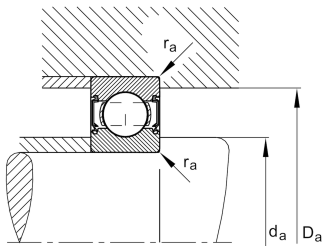
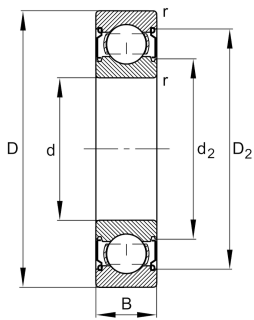


**FAG****6313-C-Z**

## Deep groove ball bearing

Deep groove ball bearing 63.-C-Z, single row, Generation C, shield, steel sheet metal cage

## Technical information



## Your current product variant

Changed internal design	C	GenerationC
Sealing	Z	Non-contact shield on one Side
Cage	JN	Steel sheet metal
Tolerance class	P6	Class 6 (ISO 492:2023)
Dimensional / heat stabilization	S0	Rings dimensional stabilized up to 150°
Lubricant	Without	Bearing not greased
Radial internal clearance	CN (Group N)	Normal internal clearance
Bore type	Z	Cylindrical

## Main Dimensions &amp; Performance Data

d	65 mm	Bore diameter
D	140 mm	Outside diameter
B	33 mm	Width
$C_r$	101.000 N	Basic dynamic load rating, radial
$C_{0r}$	60.000 N	Basic static load rating, radial
$C_{ur}$	4.100 N	Fatigue load limit, radial
$n_G$	7.300 1/min	Limiting speed
$n_{gr}$	7.000 1/min	Reference speed
$\approx m$	2,07 kg	Weight



### Mounting dimensions

$d_{a \min}$	77 mm	Minimum diameter shaft shoulder
$D_{a \max}$	128 mm	Maximum diameter of housing shoulder
$r_{a \max}$	2,1 mm	Maximum fillet radius

### Dimensions

$r_{\min}$	2,1 mm	Minimum chamfer dimension
$D_1$	118,22 mm	Shoulder diameter outer ring
$D_2$	121,4 mm	Caliber diameter outer ring
$d_1$	87,73 mm	Shoulder diameter inner ring
$d_2$	85,59 mm	Caliber diameter inner ring


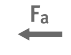
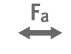



### Temperature range

$T_{\min}$	-30 °C	Operating temperature min.
$T_{\max}$	150 °C	Operating temperature max.

### Calculation factors

$f_0$	13,2	Calculation factor
-------	------	--------------------

### Characteristics

	Radial load
	Axial load in one direction
	Axial load in two directions
	Grease Lubrication
	Oil Lubrication
	Sealed on one side