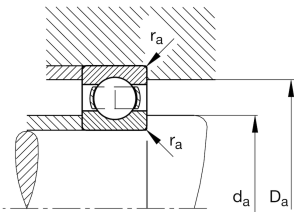
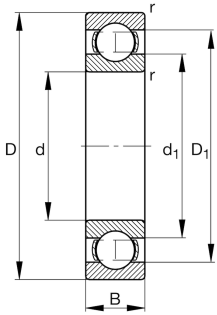


**FAG****6217-TVH-C4**

Deep groove ball bearing

Deep groove ball bearing 62...-TVH, single row, plastic cage

Technical information



Your current product variant

Sealing	Without	Not sealed
Cage	TVH	Solid cage made of glass-fiber reinforced polyamid PA66
Tolerance class	PN	Normal (ISO 492:2023)
Dimensional / heat stabilization	S0	Rings dimensional stabilized up to 150°
Lubricant	Without	Bearing not greased
Radial internal clearance	C4 (Group 4)	Internal clearance larger than C3
Bore type	Z	Cylindrical

Main Dimensions & Performance Data

d	85 mm	Bore diameter
D	150 mm	Outside diameter
B	28 mm	Width
C _r	89.000 N	Basic dynamic load rating, radial
C _{0r}	64.000 N	Basic static load rating, radial
C _{ur}	4.050 N	Fatigue load limit, radial
n _G	6.700 1/min	Limiting speed
n _{gr}	5.300 1/min	Reference speed
m	1,812 kg	Weight



Mounting dimensions

$d_{a \min}$	96 mm	Minimum diameter shaft shoulder
$D_{a \max}$	139 mm	Maximum diameter of housing shoulder
$r_{a \max}$	2 mm	Maximum fillet radius

Dimensions

r_{\min}	2 mm	Minimum chamfer dimension
D_1	129,79 mm	Shoulder diameter outer ring
d_1	106,58 mm	Shoulder diameter inner ring

Temperature range

T_{\min}	-30 °C	Operating temperature min.
T_{\max}	120 °C	Operating temperature max.

Calculation factors

f_0	14,8	Calculation factor
-------	------	--------------------

Characteristics



Radial load



Axial load in one direction



Axial load in two directions



Grease Lubrication



Oil Lubrication



Not sealed