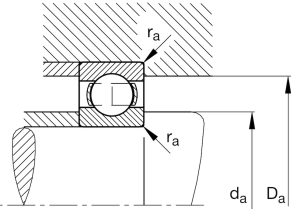
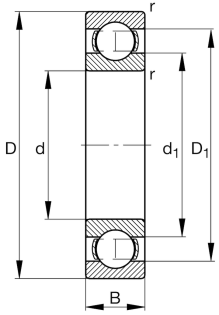


**FAG****6222**

Rillenkugellager

Deep groove ball bearing 62, single row, steel sheet metal cage

Teknik bilgiler



Ваш текущий вариант продукта

Dichtung	Ohne	Nicht gedichtet
Käfig	JN	Stahlblech
Toleranzklasse	PN	Normal (ISO 492:2023)
Maß-/Wärmestabilisierung	S0	Ringe maßstabillisiert bis 150°
Fett	Ohne	Lager nicht befettet
Radialluft	CN (Gruppe N)	Lagerluft normal
Bohrungsausführung	Z	Zylindrisch

Main Dimensions & Performance Data

d	110 mm	Bore diameter
D	200 mm	Outside diameter
B	38 mm	Width
C _r	153.000 N	Basic dynamic load rating, radial
C _{0r}	117.000 N	Basic static load rating, radial
C _{ur}	6.500 N	Fatigue load limit, radial
n _G	4.450 1/min	Limiting speed
n _{gr}	4.500 1/min	Reference speed
m	4,445 kg	Bec



Mounting dimensions

$d_{a \min}$	122 mm	Minimum diameter shaft shoulder
$D_{a \max}$	188 mm	Maximum diameter of housing shoulder
$r_{a \max}$	2,1 mm	Maximum fillet radius

Dimensions

r_{\min}	2,1 mm	Minimum chamfer dimension
D_1	171,68 mm	Shoulder diameter outer ring
d_1	138,42 mm	Shoulder diameter inner ring


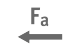
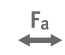



Temperature range

T_{\min}	-30 °C	Operating temperature min.
T_{\max}	150 °C	Operating temperature max.

Calculation factors

f_0	14,3	Calculation factor
-------	------	--------------------

Характеристики

-  Радиальная нагрузка
-  Осевая нагрузка в одном направлении
-  Осевая нагрузка в обоих направлениях
-  Смазывание пластичной смазкой
-  Смазывание маслом
-  Без уплотнений