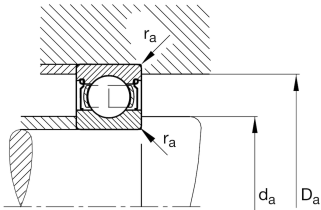
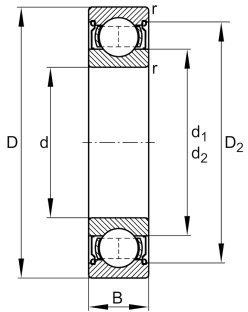


**FAG****6024-Z-C3**

Deep groove ball bearing

Deep groove ball bearing 60...-Z, single row, shield, steel sheet metal cage

## Technical information



## Your current product variant

Sealing	Z	Non-contact shield on one Side
Cage	JN	Steel sheet metal
Tolerance class	PN	Normal (ISO 492:2023)
Dimensional / heat stabilization	S0	Rings dimensional stabilized up to 150°
Lubricant	Without	Bearing not greased
Radial internal clearance	C3 (Group 3)	Internal clearance larger than CN
Bore type	Z	Cylindrical

## Main Dimensions &amp; Performance Data

d	120 mm	Bore diameter
D	180 mm	Outside diameter
B	28 mm	Width
C <sub>r</sub>	88.000 N	Basic dynamic load rating, radial
C <sub>0r</sub>	77.000 N	Basic static load rating, radial
C <sub>ur</sub>	3.650 N	Fatigue load limit, radial
n <sub>G</sub>	5.000 1/min	Limiting speed
n <sub>gr</sub>	4.450 1/min	Reference speed
≈m	2,059 kg	Weight



### Mounting dimensions

$d_{a \min}$	128,8 mm	Minimum diameter shaft shoulder
$D_{a \max}$	171,2 mm	Maximum diameter of housing shoulder
$r_{a \max}$	2 mm	Maximum fillet radius

### Dimensions

$r_{\min}$	2 mm	Minimum chamfer dimension
$D_1$	161,38 mm	Shoulder diameter outer ring
$D_2$	165,36 mm	Caliber diameter outer ring
$d_1$	139,4 mm	Shoulder diameter inner ring

### Temperature range

$T_{\min}$	-30 °C	Operating temperature min.
$T_{\max}$	150 °C	Operating temperature max.

### Calculation factors

$f_0$	15,8	Calculation factor
-------	------	--------------------

### Characteristics

	Radial load
	Axial load in one direction
	Axial load in two directions
	Grease Lubrication
	Oil Lubrication
	Sealed on one side