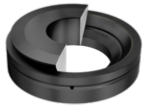


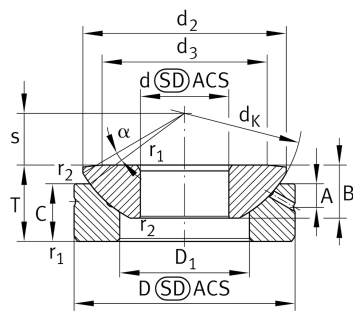
**GE45-AX**

Spherical plain bearing



Axial spherical plain bearing, requiring maintenance, sliding contact surface: steel/steel

Technical information

**Your current product variant**

Maintenance	Maintenance required
Coating	Durotect M Inner- and outer ring coated with Durotect M (Manganese Phosphate)

Main Dimensions & Performance Data

d	45 mm	Inner diameter bearing
D	120 mm	Outside diameter bearing
T	36,5 mm	Height
C _a	632.000 N	Basic dynamic load rating, axial
C _{0a}	2.430.000 N	Basic static load rating, axial
≈m	2,49 kg	Weight

Mounting dimensions

r _{1smin}	1 mm	Edge Spacing
r _{2smin}	0,3 mm	Edge Spacing
d _{a max}	89 mm	Connection measure Inner ring
D _{a min}	74 mm	Housing Connection Diameter



Dimensions

d_K	130 mm	Ball diameter
d_3	89	Front surface diameter of shaft washer
D_1	68 mm	Inner diameter of housing washer
B	31 mm	Width Inner ring
C	25 mm	Width Outer ring
s	27,5 mm	Plane Surface Spacing
A	11 mm	Distance lubrication Bore
α	6 °	Tilt angle
d_{OT}	0 mm	Bore diameter bearing, upper tolerance
d_{UT}	-0,012 mm	Bore diameter bearing, lower tolerance
D_{OT}	0 mm	Outer diameter, upper tolerance
D_{UT}	-0,015 mm	Outside diameter, lower tolerance
T_{OT}	0 mm	Height, upper tolerance
T_{UT}	-0,4 mm	Height, lower tolerance
C_{UT}	0 mm	Width outer ring, upper tolerance
C_{OT}	-0,24 mm	Width outer ring, lower tolerance
B_{OT}	0 mm	Width inner ring, upper tolerance
B_{UT}	-0,24 mm	Width inner ring, lower tolerance
d_2	112 mm	Connection measure Inner ring

Temperature range

T_{min}	-60 °C	Operating temperature min.
T_{max}	200 °C	Operating temperature max.



Characteristics



Radial load



Axial load in one direction



Grease Lubrication



Not sealed



Static angular error and misalignment



Dynamic angular error and misalignment