

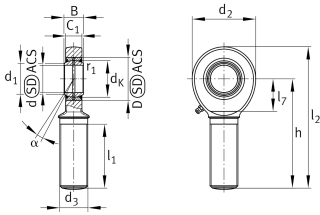
**GAR40-DO-2RS**

Rod end



Rod end with external thread, right hand thread, requiring maintenance, sliding contact surface: steel/steel, DIN ISO 12240-4, dimension series E, type M, sealed design

Technical information



Your current product variant

Clampable	Not clampable	
Maintenance	Maintenance required	
Lubrication nipple	DIN71412-AS6 (tapered grease nipple)	
Slotted	No	
Thread Pitch	Right-hand thread	
Type of Seal	2RS	Lip seals on both sides
Radial internal clearance	CN (Group N)	Normal internal clearance
Mounting	External thread	

Main Dimensions & Performance Data

C_r	129.000 N	Basic dynamic load rating, radial
C_{0r}	194.000 N	Basic static load rating, radial
d	40 mm	Bore diameter bearing
D	62 mm	Outside diameter bearing
l_2	196 mm	Total length external thread head
B	28 mm	Width inner ring
d_2	92 mm	Outer eye diameter
$\approx m$	1,97 kg	Weight



Mounting dimensions

d ₁	45 mm	Outer flange diameter inner ring
r _{1smin}	0,6 mm	Edge Spacing

Dimensions

d _K	53 mm	Ball diameter
d ₃	M39x3	Thread size
h	150 mm	Shank Length External thread rod
C ₁	22,6 mm	Width of the rod end
α	7 °	Tilt angle
l ₁	86 mm	Shank Length External thread head
l ₇	48 mm	Distance drilling with/shaft start
d _{OT}	0 mm	Bore diameter bearing, upper tolerance
d _{UT}	-0,012 mm	Bore diameter bearing, lower tolerance
B _{OT}	0 mm	Width inner ring, upper tolerance
B _{UT}	-0,12 mm	Width inner ring, lower tolerance
G _r	0,043 - 0,12	Radial Clearance
G _{rmax}	0,12 mm	Radial clearance, maximum
G _{rmin}	0,043 mm	Radial clearance, minimum

Temperature range

T _{min}	-30 °C	Operating temperature min.
T _{max}	130 °C	Operating temperature max.



Characteristics



Radial load



Axial load in one direction



Axial load in two directions



Grease Lubrication



Sealed on both sides



Static angular error and misalignment



Dynamic angular error and misalignment