

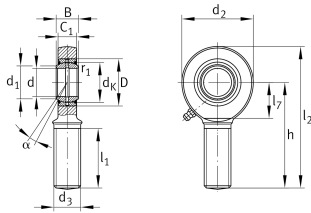
**GAR10-DO**

## Rod end



Rod end with external thread, right hand thread, requiring maintenance, sliding contact surface: steel/steel, DIN ISO 12240-4, dimension series E, type M, open

## Technical information

**Your current product variant**

Clampable	Not clampable	
Maintenance	Maintenance required	
Lubrication nipple	Cannot be relubricated	
Slotted	No	
Thread Pitch	Right-hand thread	
Sealing	Without	
Radial internal clearance	CN (Group N)	Normal internal clearance
Mounting	External thread	

**Main Dimensions & Performance Data**

$C_r$	10.600 N	Basic dynamic load rating, radial
$C_{0r}$	20.600 N	Basic static load rating, radial
d	10 mm	Bore diameter bearing
D	19 mm	Outside diameter bearing
$l_2$	62,5 mm	Total length external thread head
B	9 mm	Width inner ring
$d_2$	29 mm	Outer eye diameter
$\approx m$	56,231 g	Weight



### Mounting dimensions

d <sub>1</sub>	13,2 mm	Outer flange diameter inner ring
r <sub>1smin</sub>	0,3 mm	Edge Spacing

### Dimensions

d <sub>K</sub>	16 mm	Ball diameter
d <sub>3</sub>	M10	Thread size
h	48 mm	Shank Length External thread rod
C <sub>1</sub>	7 mm	Width of the rod end
α	12 °	Tilt angle
l <sub>1</sub>	26 mm	Shank Length External thread head
l <sub>7</sub>	15 mm	Distance drilling with/shaft start
d <sub>OT</sub>	0 mm	Bore diameter bearing, upper tolerance
d <sub>UT</sub>	-0,008 mm	Bore diameter bearing, lower tolerance
B <sub>OT</sub>	0 mm	Width inner ring, upper tolerance
B <sub>UT</sub>	-0,12 mm	Width inner ring, lower tolerance
G <sub>r</sub>	0,023 - 0,068	Radial Clearance
G <sub>rmax</sub>	0,068 mm	Radial clearance, maximum
G <sub>rmin</sub>	0,023 mm	Radial clearance, minimum

### Temperature range

T <sub>min</sub>	-60 °C	Operating temperature min.
T <sub>max</sub>	200 °C	Operating temperature max.



### Characteristics

---



Radial load



Grease Lubrication



Not sealed



Static angular error and misalignment



Dynamic angular error and misalignment