

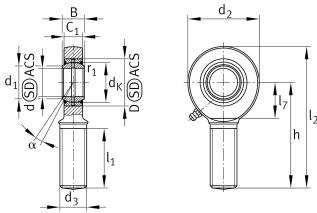
**GAL20-DO**

Rod end



Rod end with external thread, left hand thread, requiring maintenance, sliding contact surface: steel/steel, DIN ISO 12240-4, dimension series E, type M, open

Technical information



Your current product variant

Clampable	Not clampable
Maintenance	Maintenance required
Lubrication nipple	DIN71412-AS6 (tapered grease nipple)
Slotted	No
Thread Pitch	Left-hand thread
Sealing	Without
Radial internal clearance	CN (Group N) Normal internal clearance
Mounting	External thread

Main Dimensions & Performance Data

C_r	38.500 N	Basic dynamic load rating, radial
C_{0r}	75.600 N	Basic static load rating, radial
d	20 mm	Bore diameter bearing
D	35 mm	Outside diameter bearing
l_2	104,5 mm	Total length external thread head
B	16 mm	Width inner ring
d_2	53 mm	Outer eye diameter
$\approx m$	330 g	Weight



Mounting dimensions

d ₁	24,1 mm	Outer flange diameter inner ring
r _{1smin}	0,3 mm	Edge Spacing

Dimensions

d _K	29 mm	Ball diameter
d ₃	M20x1,5	Thread size
h	78 mm	Shank Length External thread rod
C ₁	13 mm	Width of the rod end
α	9 °	Tilt angle
l ₁	43 mm	Shank Length External thread head
l ₇	27 mm	Distance drilling with/shaft start
d _{OT}	0 mm	Bore diameter bearing, upper tolerance
d _{UT}	-0,01 mm	Bore diameter bearing, lower tolerance
B _{OT}	0 mm	Width inner ring, upper tolerance
B _{UT}	-0,12 mm	Width inner ring, lower tolerance
G _r	0,03 - 0,082	Radial Clearance
G _{rmax}	0,082 mm	Radial clearance, maximum
G _{rmin}	0,03 mm	Radial clearance, minimum

Temperature range

T _{min}	-60 °C	Operating temperature min.
T _{max}	200 °C	Operating temperature max.



Characteristics



Radial load



Grease Lubrication



Not sealed



Static angular error and misalignment



Dynamic angular error and misalignment