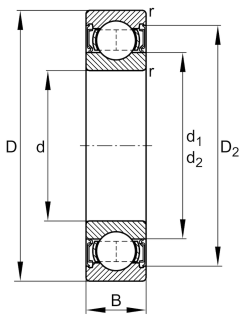


**FAG****61817-2RZ**

Deep groove ball bearing

Deep groove ball bearing 618..-2RZ, single row, shields, steel sheet metal cage

Technical information



Your current product variant

| | | |
|----------------------------------|--------------|---|
| Sealing | 2RZ | Non-contact seal on both sides |
| Cage | JN | Steel sheet metal |
| Tolerance class | PN | Normal (ISO 492:2023) |
| Dimensional / heat stabilization | S0 | Rings dimensional stabilized up to 150° |
| Lubricant | GA13 | Ball bearing and insert bearing grease |
| Radial internal clearance | CN (Group N) | Normal internal clearance |
| Bore type | Z | Cylindrical |

Main Dimensions & Performance Data

| | | |
|-----------------|-------------|-----------------------------------|
| d | 85 mm | Bore diameter |
| D | 110 mm | Outside diameter |
| B | 13 mm | Width |
| C _r | 20.400 N | Basic dynamic load rating, radial |
| C _{0r} | 19.800 N | Basic static load rating, radial |
| C _{ur} | 1.160 N | Fatigue load limit, radial |
| n _G | 7.200 1/min | Limiting speed |
| n _{gr} | 4.900 1/min | Reference speed |
| m | 0,271 kg | Weight |



Mounting dimensions

| | | |
|--------------|----------|--------------------------------------|
| $d_{a \min}$ | 89,6 mm | Minimum diameter shaft shoulder |
| $D_{a \max}$ | 105,4 mm | Maximum diameter of housing shoulder |
| $r_{a \max}$ | 1 mm | Maximum fillet radius |

Dimensions

| | | |
|------------|-----------|------------------------------|
| r_{\min} | 1 mm | Minimum chamfer dimension |
| D_1 | 102,07 mm | Shoulder diameter outer ring |
| D_2 | 104,2 mm | Caliber diameter outer ring |
| d_1 | 93,2 mm | Shoulder diameter inner ring |

Temperature range

| | | |
|------------|--------|----------------------------|
| T_{\min} | -20 °C | Operating temperature min. |
| T_{\max} | 100 °C | Operating temperature max. |

Calculation factors

| | | |
|-------|------|--------------------|
| f_0 | 16,2 | Calculation factor |
|-------|------|--------------------|

Characteristics

| | |
|---|--|
|  | Radial load |
|  | Axial load in one direction |
|  | Axial load in two directions |
|  | Lifetime lubrication, freedom from maintenance |
|  | Grease Lubrication |
|  | Sealed on both sides |