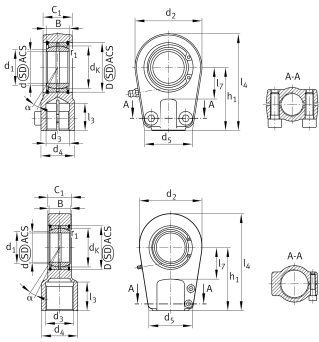


IMAGE  
COMING SOON**GIHRK40-UK-2RS**

## Rod end

Hydraulic rod end, with thread clamping device, right hand thread, maintenance-free, sliding layer: ELGOGLIDE, sealed design

## Technical information



## Your current product variant

Clampable	Clampable	
Maintenance	Maintenance free	
Lubrication nipple	Cannot be relubricated	
Slotted	Slotted, both sides	
Thread Pitch	Right-hand thread	
Sealing	2RS	Lip seals on both sides
Mounting	Internal thread	

## Main Dimensions &amp; Performance Data

$C_r$	280.000 N	Basic dynamic load rating, radial
$C_{0r}$	228.000 N	Basic static load rating, radial
d	40 mm	Bore diameter bearing
D	62 mm	Outside diameter bearing
$l_4$	135 mm	Total length internal thread head
B	28 mm	Width inner ring,
$d_2$	94 mm	Outer eye diameter
$\approx m$	2,1 kg	Weight



## Dimensions

$d_K$	53 mm	Ball diameter
$d_3$	M35x1,5	Thread size
$d_4$	49 mm	Shank diameter
$h_1$	85 mm	Shank Length Internal thread head
$C_1$	35 mm	Width of the rod end
$\alpha$	7 °	Tilt angle
$l_3$	36 mm	Thread length Internal thread
$l_7$	45 mm	Distance drilling with/shaft start
$d_5$	76 mm	Shank diameter, large
$G_r$	0 - 0,06 mm	Radial Clearance
$M_A$	64 Nm	Tightening torque
$d_{OT}$	0 mm	Bore diameter bearing, upper tolerance
$d_{UT}$	-0,012 mm	Bore diameter bearing, lower tolerance
$B_{OT}$	0 mm	Width inner ring, upper tolerance
$B_{UT}$	-0,12 mm	Width inner ring, lower tolerance
$G_{rmax}$	0,06 mm	Radial clearance, maximum
$G_{rmin}$	0 mm	Radial clearance, minimum

## Temperature range

$T_{min}$	-30 °C	Operating temperature min.
$T_{max}$	130 °C	Operating temperature max.



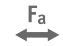




## Mounting dimensions

$d_1$	45 mm	Outer flange diameter inner ring
$r_{1smin}$	0,6 mm	Edge Spacing



### Characteristics

---

-  Radial load
-  Axial load in one direction
-  Axial load in two directions
-  Lifetime lubrication, freedom from maintenance
-  Sealed on both sides
-  Static angular error and misalignment
-  Dynamic angular error and misalignment