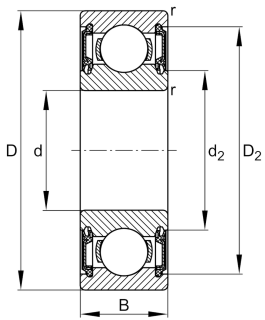


**FAG****6007-H-2RSR-C3>N**

Deep groove ball bearing

Deep groove ball bearing 60...-H-2RSR, single row, H-Series, seals, steel sheet metal cage

## Technical information

**Your current product variant**

Version code	>N	Not marked on bearing
Changed internal design	H	Design variant H (H-Series)
Sealing	2RSR	Contact seal on both sides
Cage	JN	Steel sheet metal
Tolerance class	PN	Normal (ISO 492:2023)
Dimensional / heat stabilization	SN	Rings dimensional stabilized up to 120°
Lubricant	Lubricating grease	
Radial internal clearance	C3 (Group 3)	Internal clearance larger than CN
Bore type	Z	Cylindrical

**Main Dimensions & Performance Data**

d	35 mm	Bore diameter
D	62 mm	Outside diameter
B	14 mm	Width
C <sub>r</sub>	15.980 N	Basic dynamic load rating, radial
C <sub>0r</sub>	10.280 N	Basic static load rating, radial
C <sub>ur</sub>	610 N	Fatigue load limit, radial
n <sub>G</sub>	6.200 1/min	Limiting speed
≈m	0,148 kg	Weight



### Mounting dimensions

$d_{a \min}$	39,6 mm	Minimum diameter shaft shoulder
$D_{a \max}$	57,4 mm	Maximum diameter of housing shoulder
$r_{a \max}$	1 mm	Maximum fillet radius

### Dimensions

$r_{\min}$	1 mm	Minimum chamfer dimension
$D_1$	53,7 mm	Shoulder diameter outer ring
$D_2$	56,25 mm	Caliber diameter outer ring
$d_1$	43,3 mm	Shoulder diameter inner ring

### Temperature range

$T_{\min}$	-20 °C	Operating temperature min.
$T_{\max}$	100 °C	Operating temperature max.

### Calculation factors

$f_0$	14,9	Calculation factor
-------	------	--------------------

### Characteristics

	Radial load
	Axial load in one direction
	Axial load in two directions
	Lifetime lubrication, freedom from maintenance
	Grease Lubrication
	Sealed on both sides