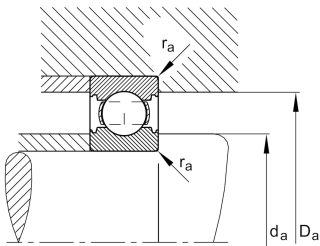
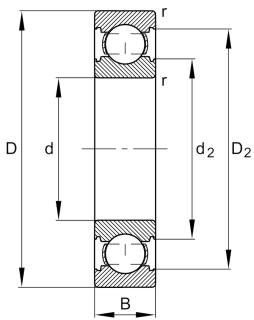


**FAG****6210-C>V**

Deep groove ball bearing

Deep groove ball bearing 62...-C, single row,
Generation C, steel sheet metal cage

Technical information



Your current product variant

Version code	>V	Not marked on bearing
Changed internal design	C	GenerationC
Sealing	Without	Not sealed
Cage	JN	Steel sheet metal
Tolerance class	P6	Class 6 (ISO 492:2023)
Dimensional / heat stabilization	SN	Rings dimensional stabilized up to 120°
Lubricant	Without	Bearing not greased
Radial internal clearance	CN (Group N)	Normal internal clearance
Bore type	Z	Cylindrical

Main Dimensions & Performance Data

d	50 mm	Bore diameter
D	90 mm	Outside diameter
B	20 mm	Width
C _r	40.000 N	Basic dynamic load rating, radial
C _{0r}	23.200 N	Basic static load rating, radial
C _{ur}	1.610 N	Fatigue load limit, radial
n _G	11.700 1/min	Limiting speed
n _{gr}	9.200 1/min	Reference speed
≈m	0,421 kg	Weight



Mounting dimensions

$d_{a \min}$	57 mm	Minimum diameter shaft shoulder
$D_{a \max}$	83 mm	Maximum diameter of housing shoulder
$r_{a \max}$	1 mm	Maximum fillet radius

Dimensions

r_{\min}	1,1 mm	Minimum chamfer dimension
D_1	78,64 mm	Shoulder diameter outer ring
D_2	81,65 mm	Caliber diameter outer ring
d_1	61,87 mm	Shoulder diameter inner ring
d_2	59,23 mm	Caliber diameter inner ring

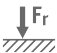
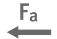
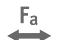



Temperature range

T_{\min}	-30 °C	Operating temperature min.
T_{\max}	120 °C	Operating temperature max.

Calculation factors

f_0	14,4	Calculation factor
-------	------	--------------------

Characteristics

	Radial load
	Axial load in one direction
	Axial load in two directions
	Grease Lubrication
	Oil Lubrication
	Not sealed