

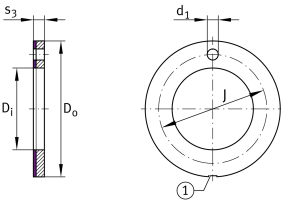
**EGW62-E40**

## Thrust washer



Thrust washer, maintenance-free, material in accordance with ISO 3547-4, with steel backing

## Technical information



## Your current product variant

|                        |  |
|------------------------|--|
| Maintenance            | Maintenance free                       |
| Material sliding Layer | E40 Maintenance-free sliding layer E40 |
| Material back          | Steel                                  |

## Main Dimensions &amp; Performance Data

|             |           |                                  |
|-------------|-----------|----------------------------------|
| $D_i$       | 62 mm     | Inner diameter                   |
| $s_3$       | 2 mm      | Wall thickness                   |
| $C_a$       | 468.000 N | Basic dynamic load rating, axial |
| $C_{0a}$    | 836.000 N | Basic static load rating, axial  |
| $D_o$       | 90 mm     | Outer Diameter                   |
| $\approx m$ | 52,28 g   | Weight                           |



### Dimensions

|                    |          |  |
|--------------------|----------|--|
| J                  | 76 mm    | Pitch circle   |
| d <sub>1</sub>     | 4 mm     | Fixing hole diameter                                 |
| t <sub>a</sub>     | 1,5 mm   | Mounting dimension                                   |
| d <sub>6a</sub>    | 90 mm    | Mounting dimension d <sub>6a</sub>                   |
| D <sub>o</sub> UT  | -0,25 mm | Outside diameter, lower tolerance                    |
| D <sub>i</sub> OT  | 0,25 mm  | Inner diameter, upper tolerance                      |
| D <sub>i</sub> UT  | 0 mm     | Inner diameter, lower tolerance                      |
| D <sub>o</sub> OT  | 0 mm     | Outside diameter, upper tolerance                    |
| s <sub>3</sub> OT  | 0 mm     | Wall thickness, upper tolerance                      |
| s <sub>3</sub> UT  | -0,05 mm | Wall thickness, lower tolerance                      |
| J OT               | 0,12 mm  | Pitch circle, upper tolerance                        |
| J UT               | -0,12 mm | Pitch circle, lower tolerance                        |
| d <sub>1</sub> OT  | 0,4 mm   | Fixing hole diameter, upper tolerance                |
| d <sub>1</sub> UT  | 0,1 mm   | Fixing hole diameter, lower tolerance                |
| t <sub>a</sub> OT  | 0,2 mm   | Mounting dimension, upper tolerance                  |
| t <sub>a</sub> UT  | -0,2 mm  | Mounting dimension, lower tolerance                  |
| d <sub>6a</sub> OT | 0,12 mm  | Mounting dimension d <sub>6a</sub> , upper tolerance |
| d <sub>6a</sub> UT | 0 mm     | Mounting dimension d <sub>6a</sub> , lower tolerance |

### Temperature range

|                  |         |                            |
|------------------|---------|----------------------------|
| T <sub>min</sub> | -200 °C | Operating temperature min. |
| T <sub>max</sub> | 280 °C  | Operating temperature max. |



## Characteristics

---

-  Axial load in one direction
-  Lifetime lubrication, freedom from maintenance
-  Not sealed
-  Small design envelope