



FAG

SES505-L

Plummer block housing

Split plummer block housing for various bearing designs. The SNV series will be replaced by the new SES series in 2022.

Technical information

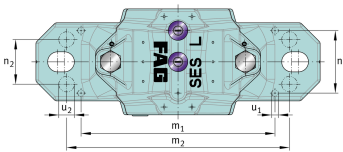
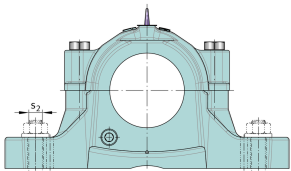
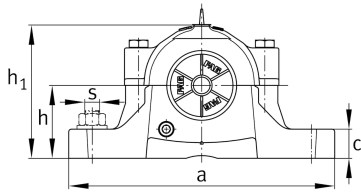


Main Dimensions & Performance Data

D	52 mm	Outside diameter bearing
a	165 mm	Length base
h ₁	74 mm	Height
g	67 mm	Width housing body
K	25 mm	Width bearing seat
≈m	1,46 kg	Weight



Dimensions



b	46 mm	Width base
c	19 mm	Height base
h	40 mm	Base to shaft centerline height
m	130 mm	Distance fixing bore
s	12,7 mm	Screw size
s	M12	Size of fixing screws
u	15 mm	Width slot
v	20 mm	Length slot
D ₂	31,5 mm	Diameter sealing
D ₃	39,5 mm	Diameter sealing groove
D ₅	37,7 mm	Outside diameter sealing labyrinth
g ₁	5 mm	Width sealing groove
g ₂	52 mm	Distance sealing
g ₃	10 mm	Wall thickness
g ₄	19 mm	Distance oil lubrication
m ₁	100 mm	Distance holes aligned pins m1
n ₃	36 mm	Distance lubrication
n ₄	55 mm	Distance lubrication sealing
u ₁	4 mm	Bore diameter u1
u ₂	9 mm	Bore diameter u2