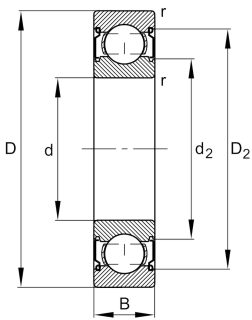


**FAG****6200-C-2Z-C3>V**

Deep groove ball bearing

Deep groove ball bearing 62...-C-2Z, single row, Generation C, shields, steel sheet metal cage

Technical information



Your current product variant

Version code	>V	Not marked on bearing
Changed internal design	C	GenerationC
Sealing	2Z	Non-contact shield on both sides
Cage	JN	Steel sheet metal
Tolerance class	P6	Class6 (P6), better then PN
Dimensional / heat stabilization	SN	Rings dimensional stabilized up to 120°
Lubricant	GA14	Ball bearing grease, low noise
Radial internal clearance	C3 (Group 3)	Internal clearance larger than CN
Bore type	Z	Cylindrical

Main Dimensions & Performance Data

d	10 mm	Bore diameter
D	30 mm	Outside diameter
B	9 mm	Width
C_r	7.000 N	Basic dynamic load rating, radial
C_{0r}	2.600 N	Basic static load rating, radial
C_{ur}	181 N	Fatigue load limit, radial
n_G	34.500 1/min	Limiting speed
n_{gr}	26.000 1/min	Reference speed
$\approx m$	0,03 kg	Weight



Mounting dimensions

$d_{a \min}$	14,2 mm	Minimum diameter shaft shoulder
$D_{a \max}$	25,8 mm	Maximum diameter of housing shoulder
$r_{a \max}$	0,6 mm	Maximum fillet radius

Dimensions

r_{\min}	0,6 mm	Minimum chamfer dimension
D_1	23,89 mm	Shoulder diameter outer ring
D_2	25,64 mm	Caliber diameter outer ring
d_1	16,11 mm	Shoulder diameter inner ring
d_2	15,14 mm	Caliber diameter inner ring

Temperature range

T_{\min}	-20 °C	Operating temperature min.
T_{\max}	120 °C	Operating temperature max.

Calculation factors

f_0	12	Calculation factor
-------	----	--------------------

Characteristics

	Radial load
	Axial load in one direction
	Axial load in two directions
	Lifetime lubrication, freedom from maintenance
	Grease Lubrication
	Sealed on both sides