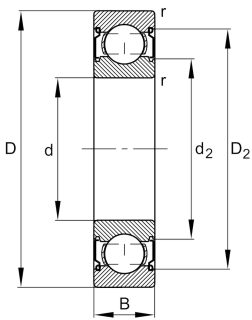


**FAG****6302-C-2Z>V**

Deep groove ball bearing

Deep groove ball bearing 63...-C-2Z, single row, Generation C, shields, steel sheet metal cage

Technical information



Your current product variant

| | | |
|----------------------------------|--------------|---|
| Version code | >V | Not marked on bearing |
| Changed internal design | C | GenerationC |
| Type of Seal | 2Z | Non-contact shield on both sides |
| Cage | JN | Steel sheet metal |
| Tolerance class | P6 | Class 6 (ISO 492:2023) |
| Dimensional / heat stabilization | SN | Rings dimensional stabilized up to 120° |
| Lubricant | GA14 | Ball bearing grease, low noise |
| Radial internal clearance | CN (Group N) | Normal internal clearance |
| Bore type | Z | Cylindrical |

Main Dimensions & Performance Data

| | | |
|----------|--------------|-----------------------------------|
| d | 15 mm | Bore diameter |
| D | 42 mm | Outside diameter |
| B | 13 mm | Width |
| C_r | 13.300 N | Basic dynamic load rating, radial |
| C_{0r} | 5.300 N | Basic static load rating, radial |
| C_{ur} | 370 N | Fatigue load limit, radial |
| n_G | 23.500 1/min | Limiting speed |
| n_{gr} | 19.200 1/min | Reference speed |
| m | 0,101 kg | Weight |



Mounting dimensions

| | | |
|--------------|---------|--------------------------------------|
| $d_{a \min}$ | 20,6 mm | Minimum diameter shaft shoulder |
| $D_{a \max}$ | 36,4 mm | Maximum diameter of housing shoulder |
| $r_{a \max}$ | 1 mm | Maximum fillet radius |

Dimensions

| | | |
|------------|----------|------------------------------|
| r_{\min} | 1 mm | Minimum chamfer dimension |
| D_1 | 34,06 mm | Shoulder diameter outer ring |
| D_2 | 36 mm | Caliber diameter outer ring |
| d_1 | 22,95 mm | Shoulder diameter inner ring |
| d_2 | 21,97 mm | Caliber diameter inner ring |

Temperature range

| | | |
|------------|--------|----------------------------|
| T_{\min} | -20 °C | Operating temperature min. |
| T_{\max} | 120 °C | Operating temperature max. |

Calculation factors

| | | |
|-------|----|--------------------|
| f_0 | 12 | Calculation factor |
|-------|----|--------------------|

Characteristics

| | |
|---|--|
|  | Radial load |
|  | Axial load in one direction |
|  | Axial load in two directions |
|  | Lifetime lubrication, freedom from maintenance |
|  | Grease Lubrication |
|  | Sealed on both sides |