



FAG

SES211-L [↗](#)

Plummer block housing

Split plummer block housing for various bearing designs. The SNV series will be replaced by the new SES series in 2022.

Technical information

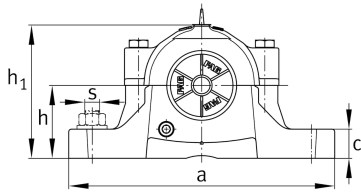


Main Dimensions & Performance Data

D	100 mm	Outside diameter bearing
a	255 mm	Length base
h ₁	128 mm	Height
g	95 mm	Width housing body
K	44 mm	Width bearing seat
≈m	4,21 kg	Weight



Dimensions



b	70 mm	Width base
c	28 mm	Height base
h	70 mm	Base to shaft centerline height
m	210 mm	Distance fixing bore
s	15,875 mm	Screw size
s	M16	Size of fixing screws
u	18 mm	Width slot
v	24 mm	Length slot
D ₂	77 mm	Diameter sealing
D ₃	85,5 mm	Diameter sealing groove
D ₅	83,2 mm	Outside diameter sealing labyrinth
g ₁	5 mm	Width sealing groove
g ₂	77 mm	Distance sealing
g ₃	12 mm	Wall thickness
g ₄	34 mm	Distance oil lubrication
m ₁	174 mm	Distance holes aligned pins m1
n ₃	56 mm	Distance lubrication
n ₄	81 mm	Distance lubrication sealing
u ₁	6 mm	Bore diameter u1
u ₂	14 mm	Bore diameter u2