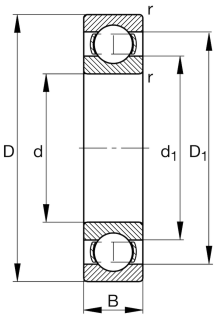


**FAG****6336-M-C3**

Deep groove ball bearing

Deep groove ball bearing 63...-M, single row,
solid brass cage

Teknik bilgiler



Mevcut ürün modeliniz

Type of Seal	Without	Not sealed
Cage	M	Solid brass cage, rolling element guided
Tolerance class	PN	Normal (PN)
Dimensional / heat stabilization	S1	Rings dimensional stabilized up to 200°
Lubricant	Without	Bearing not greased
Radial internal clearance	C3 (Group 3)	Internal clearance larger than CN
Bore type	Z	Cylindrical

Hauptabmessungen und Leistungsdaten

d	180 mm	Bohrungsdurchmesser
D	380 mm	Außendurchmesser
B	75 mm	Breite
C _r	355.000 N	Dynamische Tragzahl, radial
C _{0r}	405.000 N	Statische Tragzahl, radial
C _{ur}	16.800 N	Ermüdungsgrenzbelastung, radial
n _G	3.000 1/min	Grenzdrehzahl
n _{gr}	2.440 1/min	Bezugsdrehzahl
m	43 kg	Ağırlık



Anschlussmaße

$d_{a \min}$	197 mm	Minimaler Durchmesser der Wellenschulter
$D_{a \max}$	363 mm	Maximaler Durchmesser der Gehäuseschulter
$r_{a \max}$	3 mm	Maximaler Hohlkehlradius

Abmessungen

r_{\min}	4 mm	Minimaler Kantenabstand
D_1	316,95 mm	Borrdurchmesser des Außenringes
d_1	245,15 mm	Borrdurchmesser des Innenringes


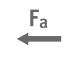
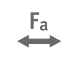




Temperaturbereich

T_{\min}	-30 °C	Betriebstemperatur min.
T_{\max}	200 °C	Betriebstemperatur max.

Berechnungsfaktoren

f_0	13,8	Berechnungsfaktor
-------	------	-------------------

Özellikleri

-  Radyal yük
-  Tek yönde aksel yük
-  İki yönde aksel yük
-  Gres yağlama
-  Yağ ile yağlama
-  Contasız
-  Büyük rulman