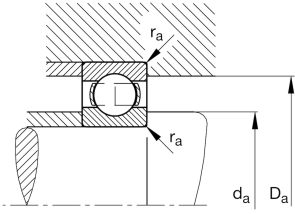
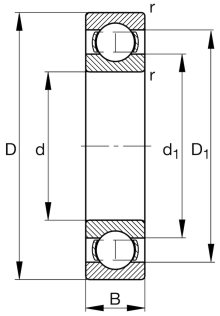


**FAG****6218-M-C4**

Deep groove ball bearing

Rillenkugellager 62...-M, einreihig, Massivkäfig
Messing

Teknik bilgiler



Ваш текущий вариант продукта

Sealing	Without	Not sealed
Cage	M	Solid brass cage, rolling element guided
Tolerance class	PN	Normal (PN)
Dimensional / heat stabilization	S0	Rings dimensional stabilized up to 150°
Lubricant	Without	Bearing not greased
Radial internal clearance	C4 (Group 4)	Internal clearance larger than C3
Bore type	Z	Cylindrical

Main Dimensions & Performance Data

d	90 mm	Bore diameter
D	160 mm	Outside diameter
B	30 mm	Width
C _r	102.000 N	Basic dynamic load rating, radial
C _{0r}	74.000 N	Basic static load rating, radial
C _{ur}	4.500 N	Fatigue load limit, radial
n _G	8.200 1/min	Limiting speed
n _{gr}	5.100 1/min	Reference speed
m	2,68 kg	Bec



Mounting dimensions

$d_{a \min}$	101 mm	Minimum diameter shaft shoulder
$D_{a \max}$	149 mm	Maximum diameter of housing shoulder
$r_{a \max}$	2 mm	Maximum fillet radius

Dimensions

r_{\min}	2 mm	Minimum chamfer dimension
D_1	138,84 mm	Shoulder diameter outer ring
d_1	112,6 mm	Shoulder diameter inner ring


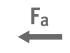



Temperature range

T_{\min}	-30 °C	Operating temperature min.
T_{\max}	150 °C	Operating temperature max.

Calculation factors

f_0	14,6	Calculation factor
-------	------	--------------------

Характеристики

	Радиальная нагрузка
	Осевая нагрузка в одном направлении
	Осевая нагрузка в обоих направлениях
	Смазывание пластичной смазкой
	Смазывание маслом
	Без уплотнений